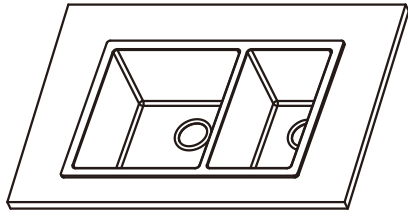
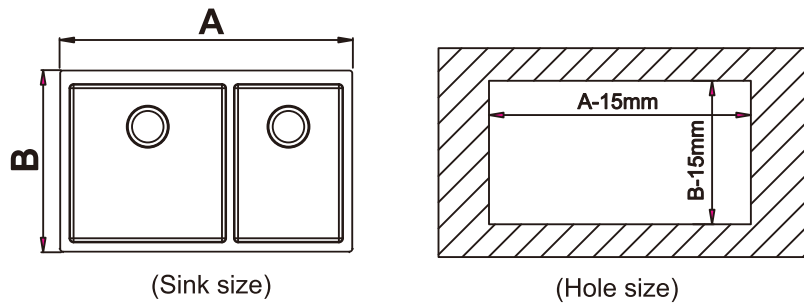


R20 HANDMADE-LIKE PRESSED SINK-2 INSTALLATIONS -TOPMOUNT

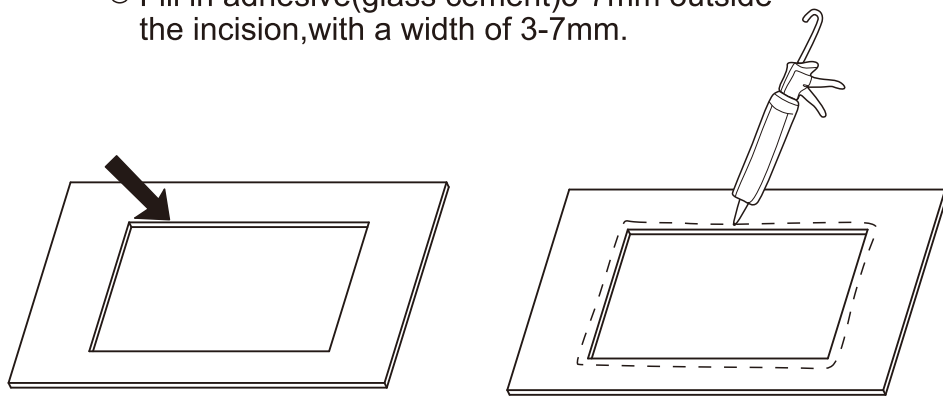


Step 1: Measure the product size and calculate the hole size.



Step 2: ① Draw the cutting line and cut the install hole;

② Fill in adhesive(glass cement)5-7mm outside the incision,with a width of 3-7mm.

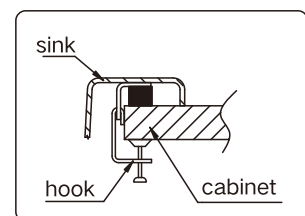
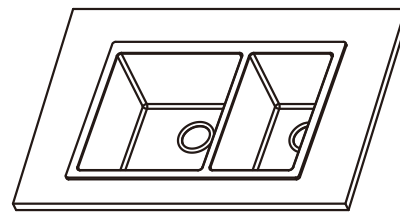


Step 3: Put the stainless steel sink in slowly.



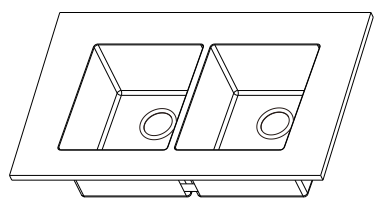
Step 4: ① Check again the position of the sink on the counter and glue appropriate glass cement at the edge of the sink.

② Fasten the clips to fix the sink.
(Note: Clips are not necessary for thick-panel sink)

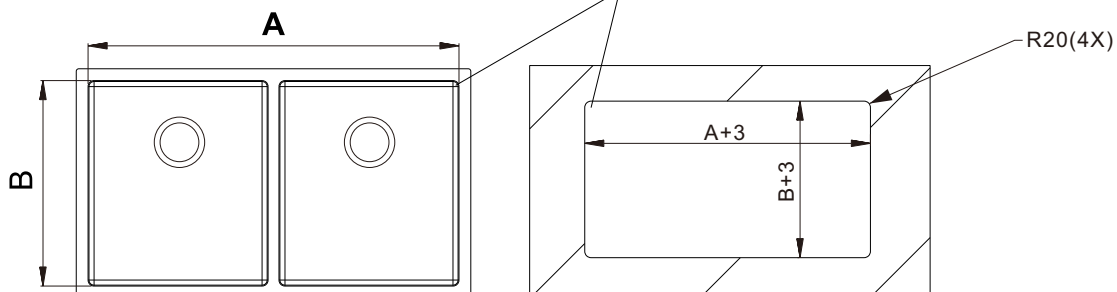


Adexa Nordic AB
Website: adexanordic.se
Email: support@adexanordic.se

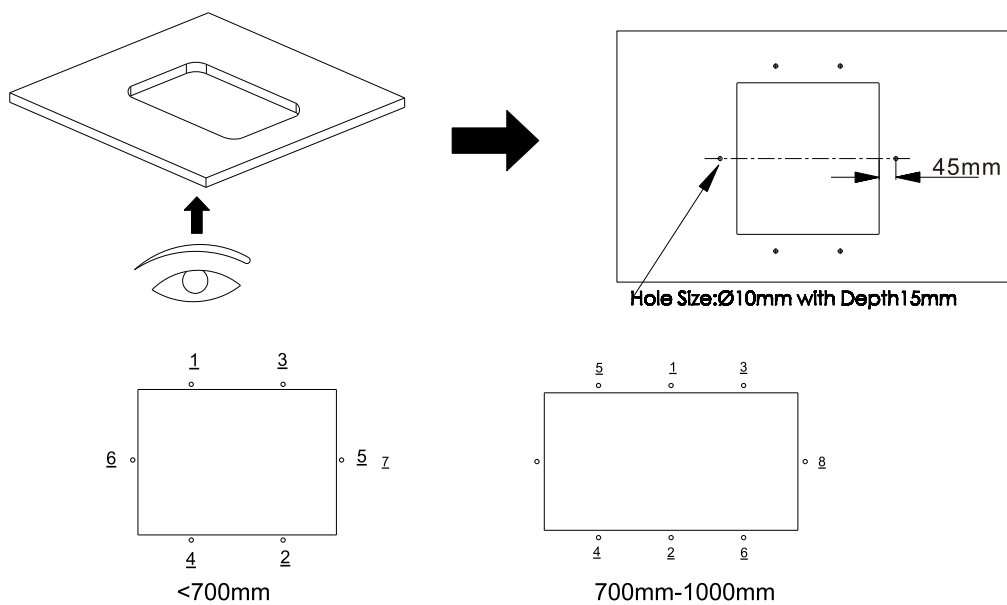
R20 HANDMADE-LIKE PRESSED SINK-2 INSTALLATIONS -UNDERMOUNT



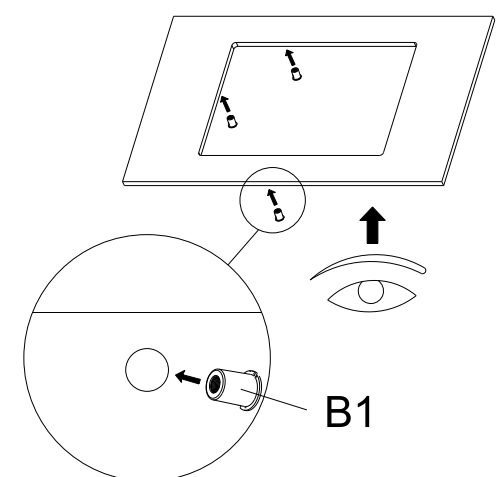
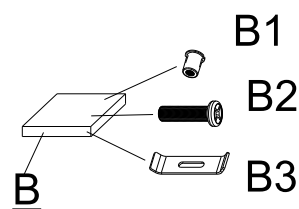
Step1: Create A Template



Step2: Fix Nuts Holes According To Instructions Below



Step3: Install The Nuts



Step4: Install The Kitchen Sink

